

Our School Staff Nurse Role Explainer

Connect for Health Service



Job role: School Staff Nurse

Service: Connect for Health

Essential Skills

Friendly and approachable

Good communication skills

Patient and understanding

Compassionate

Good time management and
prioritisation

Good attention to detail

Introduction to the role

The role of the School Staff Nurse at Connect for Health is to support the service to deliver the Healthy Child Programme. This programme aims to bring together health, education and other main partners to deliver an effective programme of prevention and support to school aged children and young people.

We do this by:

- Improving the health and wellbeing of children and young people (CYP) by providing them with support and information.
- Providing targeted support to those with additional vulnerabilities e.g. those with long-term health conditions and special educational needs and disabilities.
- Providing universal health interventions and health promotion in a variety of school and community venues.
- Working within local guidelines and following the recommendations of Working Together to Safeguard Children (DoH, 2018).

Age range and locations

The school nursing service provides health services to meet the needs of CYP between the ages of 4-19 years who attend a Warwickshire school. This includes CYP who are electively home educated or attend alternative educational provision.

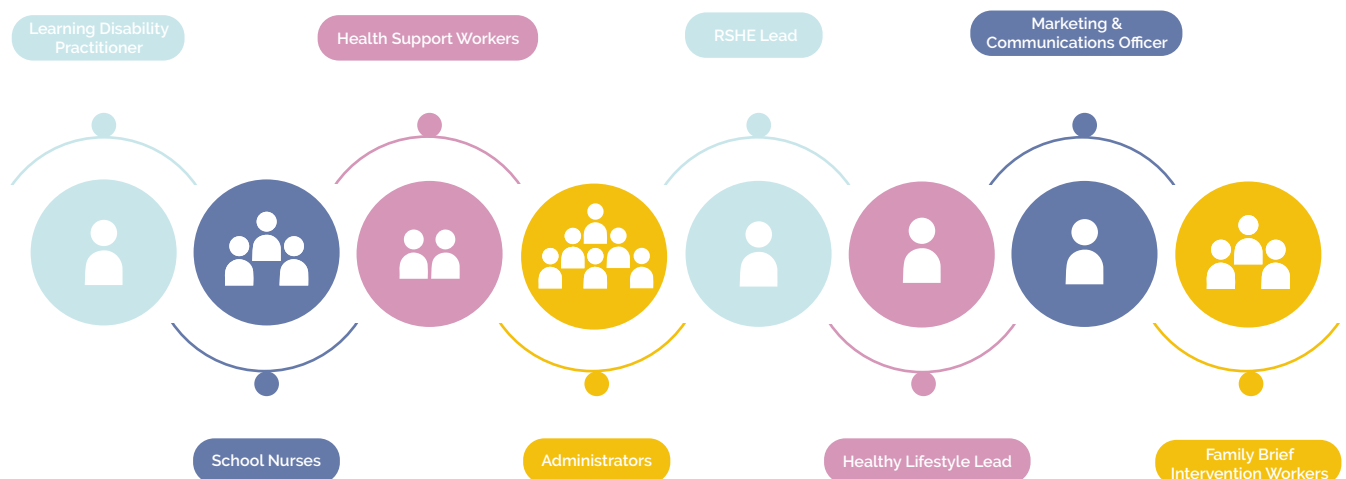
At Connect for Health, School Staff Nurses can use either the Nuneaton, Rugby or Stratford offices as a base. They then go out into schools, children's centres, community venues and CYP's homes to provide a variety of different Public Health assessments and interventions.



Here at Connect for Health we have the benefit of School Staff Nurses working in teams with Health Support Workers (HSW), Family Brief Intervention Workers (FBIW), qualified School Nurses (SCPHN) and Administrators. They also have the benefit of working with our; Learning Disability Practitioner, Marketing and Communications Officer, Relationship and Sexual Health Education (RSHE) and Health Lifestyle leads, all as part of the broader Connect for Health service.

School Staff Nurses work alongside lot of different colleagues. As you would expect, they work with school staff - particularly pastoral support colleagues. They also work with; GPs, Paediatricians, Social Workers and Sexual Health and Substance misuse colleagues.

Working with the School Staff Nurses ...



Our Vision, Our Mission

Our goal as a service ...

At Connect for Health we give children, young people and their families (CYPF) the tools to succeed and lead healthy, happy lives. We do this by ...



Promoting health

Providing valuable and essential healthcare information and tools to our CYPF's.

As a School Staff Nurse you would do this by:

- Making every contact count - sharing Public Health information during individual meetings with CYPF, whilst delivering group workshops or whilst completing child health and wellbeing assessments.



Preventing ill health

Using your professional knowledge and experience to prevent and reduce ill health and inequalities.

As a School Staff Nurse you would do this by:

- Liaising with fellow health colleagues and completing individual healthcare plans so that CYP with long-term medical conditions, such as epilepsy and anaphylaxis, can fully access their education.
- Meeting with CYP who have indicated a health need having completed our online health questionnaire.
- Responding to CYP or parents who have raised a query via our confidential text messaging service, ChatHealth.



Protecting the vulnerable

Safeguarding and supporting our vulnerable CYPF's.

As a School Staff Nurse you would do this by:

- Hearing the voice of the child by completing holistic health assessments with them.
- Sharing the health assessments with CYP's family and professional colleagues during safeguarding meetings. Advocating on behalf of CYP and keeping them as the focus of discussions.
- Completing health assessments for CYP who are in care.

What does a normal day for a School Staff Nurse look like?

There is no such thing as a normal day - every day is different and comes with its own individual set of challenges and rewards.

Morning

The day could start by heading into the office to collect some health promotion material. Next you'll be off out to one of the secondary schools to see a young man who was referred to the service with concerns around his eating and drinking. This will be the third time you are seeing him and you are hoping he has reduced his consumption of Red Bull and has now started eating breakfast before leaving the house in the morning. Luckily when you meet him he looks visibly better in himself, he is able to better concentrate on your conversation and you are confident that he has reduced his consumption. Clearly now making better health choices, you decide to discharge him but tell him he can always refer back into the service at any time.



Mid-day

Next you are on to another secondary school where you are delivering a Worthless Worries group workshop to some year 9 students. They have recently completed the online health questionnaire and attendees indicated that they have some mild emotional health issues. The workshop helps them to think differently and is an interactive, fun session. Whilst in school you pop along to see the year 7 head to make sure that the epilepsy healthcare plan has now been completed for a girl who has recently moved up from primary school.



Afternoon

Next it is back to the office for some lunch and to write up some health records before heading into a virtual safeguarding meeting in the afternoon. At the meeting you advocate for three children in the family whose health needs aren't being met by their parents. You feed back the findings from the health assessment you completed last week and indicate the health and social interventions which need to take place in order to fully support their health and wellbeing.

The day ends with writing up the health records following the safeguarding meeting. Then it's off home, ready to do an anaphylaxis training session with school staff tomorrow.



Contact Us

If you wish to get in contact with us regarding our School Staff Nurse role then please feel free to contact the service and ask to speak with Karen Cornick, our Service Manager.



03300 245 204



connectforhealth@compass-uk.org



www.compass-uk.org/services/c4h/



Coordination Hub, 1 Allerton Road, Rugby, CV23 0PA

Warwickshire County



Nuneaton Base



Rugby Base



Stratford Base

